



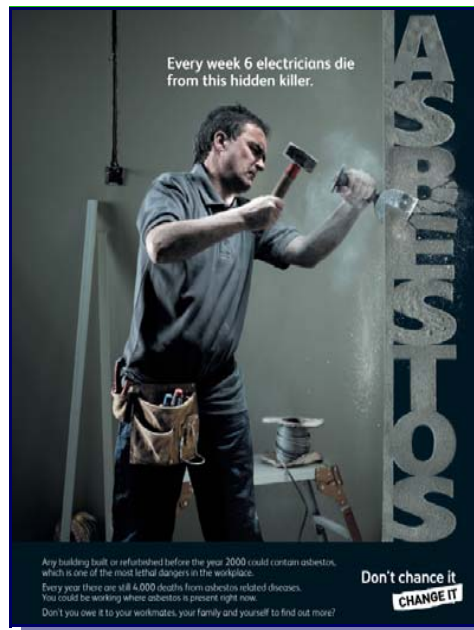
**Daniel Thomas-Jenkins**

Daniel is Noble's asbestos department manager. He has been with the company for 4 years, he joined as an experienced surveyor.

Dan now manages the asbestos department, he supervises the members of the asbestos team and deals with the more advanced asbestos projects, liaising with clients and contractors. Not afraid of hard work and long days, Dan helps to maintain and ensure the quality of Noble's asbestos work.

## HSE warns: Unlicensed stripping of Asbestos will be penalised

The Health and Safety Executive (HSE) is warning the building trade that companies or individual contractors removing asbestos **without** holding the necessary licences **WILL** face prosecution.



The move follows the HSE prosecution of a managing director for the unlicensed removal of asbestos insulation boards from the company's factory, he authorised the unlicensed removal of the identified asbestos and instructed his own employees to carry out the work.

In April 2009 he was fined and ordered to pay costs of £11,039.88 at Crown Court after pleading guilty for failing to ensure that work was undertaken by a licensed company and also the failure to ensure the safety of his employees.

The court heard although he was aware of the presence of asbestos and the associated dangers, he still instructed two of his employees to remove the asbestos insulation boards from within the factory. Also the work, if done in accordance with

the regulations, would have cost in the region of £40,000 and caused severe disruption to the business. Instead he exposed his own employees to the risk of inhaling asbestos fibres.

It is the employer's legal duty to protect the health and safety of it's employees, but in the case of asbestos they should know that any disturbance of such a dangerous material should only be tackled by licensed workers.

Asbestos is the biggest single cause of work-related deaths, with around 4,000 people a year dying from asbestos-related disease and the figure keeps rising.

Tradesmen in particular think that they are not personally at risk of exposure to asbestos or the diseases it can cause. They think because asbestos was banned many years ago, the problem has been dealt with and therefore it is not relevant to them. **The reality is very different.**

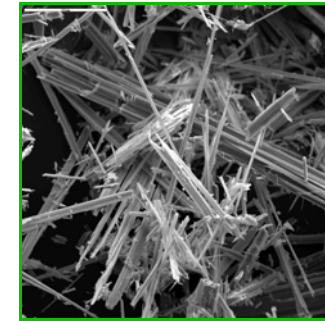
Still asbestos presents a real and relevant risk to plumbers, joiners, electricians and many other maintenance workers. Asbestos may be present in any building constructed or refurbished **before the year 2000** and it is estimated that around **500,000** non-domestic buildings could contain asbestos. These buildings all need repair and maintenance work from time to time and when the asbestos fibres are disturbed e.g. by drilling or cutting, they are likely to be inhaled as a deadly dust.

For advice on anything to do with asbestos or professional training to keep your employees safe please contact us on **0844 561 6735** or [enquiries@noble.uk.net](mailto:enquiries@noble.uk.net).

### Inside May's News Letter:

- HSE Asbestos Warning
- New Research on Asbestos
- New Reg's Gypsum
- Changes to Accreditation Schemes
- Accident at Work
- H&S Simplified
- New H&S Poster
- HSE Recruiting!
- May Training Courses

### New research reinforces asbestos dangers



A report from the International Agency for Research on Cancer (IARC), part of the World Health Organisation (WHO), said all types of asbestos, including white asbestos commonly used in artex and office buildings, cause cancer. This asbestos was used in the construction of many offices, schools, council houses and public buildings built before the 1970s and can often still be found in them.

Although this report does not provide us with new information, it does reinforce the dangers of all types of asbestos. It is important that those **working with, living in** and **working in** environments are aware of asbestos risks, and are also given training on how to work amongst it safely. **We cannot afford to be complacent about asbestos!**

The IARC identifies causes of cancer so preventative measures can be put in place. The report is seen as the next chapter in the prevention of asbestos-related cancers.

We recommend that in line with **Regulation 10** of the Control of Asbestos Regulation 2006 and Approved Code of Practice issued by the HSE, that anyone who is likely to come into contact with Asbestos or Asbestos Containing Materials in their day-to-day job has adequate Asbestos training. As a respected training provider and asbestos consultancy we can

provide all types of training to make sure you and your employees are as safe as possible when carrying out their works. Please call our Training Administrator Rebecca Huddy to find out more on **0844 561 6735** or email [rebecca.h@noble.uk.net](mailto:rebecca.h@noble.uk.net).



### New Regulation on Gypsum Plaster Board

From April 2009 the old 10% ruling of co-disposing of gypsum based plaster board has been removed, meaning that disposal of gypsum will have to be in a separate cell away from other biodegradable waste in landfill.



Although the majority of plasterboard products can be recycled, it is unlikely that the landfill operators will take on the expense of creating a separate high sulphate waste cell and therefore the most probable route for

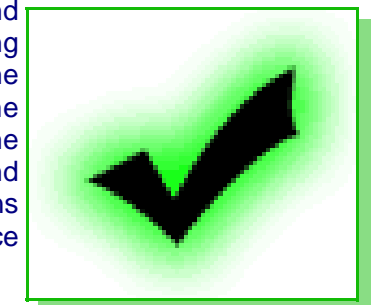
disposal will be through a Waste Transfer Station.

Visit the HSE website for the full information on the new regulations being enforced. You can also contact us if you have any queries.

### Changes to Accreditation Schemes

As of the 20th May SSIP (Safety Schemes in Procurement) will be launched. This has been designed to bring together all of the accreditation bodies or schemes such as Exor, Safety net, Construction line, NHBC safety scheme, SAFE contractor, BM TRada, Achilles Verify and Chas and the create one unified common set of standards.

We are advising our clients to wait until the scheme has been rolled out before renewing or trying to obtain accreditation for the time and go for this combined scheme when it is put in place. It is designed to reduce the costs of separate schemes, 'standardise' differing standards and provide a level playing field and aligning the criteria to meet the requirements under the Construction, Design and Management Regulations 2007 and its competence requirements.





## Health & Safety

# Noble



### Broken thumb caused by bad communication Accident at Work

An engineer was off work for three months following the accident, which happened after new working practices were introduced at the building material supplier's where he worked.

He was asked to replace the faceplates on the firm's machinery. The faceplates are used to protect the machinery and are held on by heavy magnets, which are glued to a pad.

It had been previous practice for the glue to be used around the circumference of the pad meaning full strength was needed to crowbar the pads off.

But he hadn't been told the procedure had been **changed** to use glue at only the top and bottom. As a result when he tried to crow bar the pad off the magnet it came away more easily than he had been expecting causing the magnet to fall on his thumb breaking it.



The injured party said: "We had been having problems getting the pads off the magnets and had been using full force with a crow bar to get them off. I couldn't believe it when it came off straight away. It was agonising and my thumb still niggles now. No-one had warned me that these pads had been glued on in a different way."

GMB added: "It is unacceptable that the injured person was not forewarned about the **new** method. This accident could easily have been avoided with proper procedures to tell employees about new working practices."

The law states "Employers have a duty of care to ensure the workplace is safe for employees, that includes making sure that employees are aware of new working procedures".

This accident was a the result of simple communication failure that had dramatic consequences for the persons involved, it highlights the fact that even now simplistic procedures are constantly overlooked/missed by all

employers and the importance of this is paramount to the health and safety of employees and also in consequence the bank balance of the negligent company involved. For advice on how best to communicate with employees and monitor that legislation is being implemented and adhered to contact us on **0844 561 6735** or email us on **enquiries@noble.uk.net**.

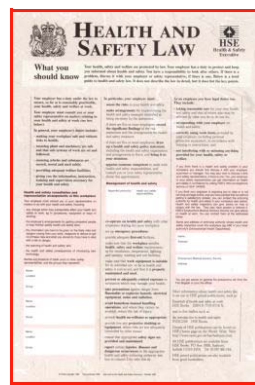
### Moves to simplify health and safety take effect

Moves to make health and safety laws easier to understand and comply with, were put into place on the 6<sup>th</sup> April 2009. The Health and Safety Executive (HSE) is making four changes to the regulations it is responsible for:

- Introducing a new, easier to read version of the law poster that employers must display
- Reducing the number of forms that employers must complete
- Simplifying arrangements for the manufacture and storage of explosives
- Aligning chemical hazard information and packaging with new EU regulations

Judith Hackitt, HSE Chair said: "We are committed to making health and safety work better for everyone. The changes we are introducing today will help ensure that we all benefit from simpler and more effective health and safety regulation – whether that is by making the law easier to understand or getting rid of unnecessary form filling.

### New H&S law poster



A new version of the health and safety law poster and leaflet is now available which will provide clearer information for workers about their right to work in places where there health and safety is properly protected.

The posters are a fixture of every workplace in Britain, employers have a legal duty to display the poster in a prominent position or provide each worker with a copy of the leaflet outlining health and safety laws.

The new easy-to-read poster and pocket cards focuses on employees and sets out in simple terms what employers and workers must do, including when there is a problem.

### Why is it changing?

Recent research showed that the poster and leaflet approved in 1999 are visually unappealing and rarely read.

### Will the information be made available in other formats or languages?

Yes and employers can obtain the new poster, pocket cards from HSE Books (tel: 01787 881165) and will be distributed by HSE Books and booksellers from 6 April 2009 onwards.

HSE is giving businesses five years to switch to the new leaflets and posters – they must be replaced by no later than 5 April 2014. **Any employers who choose to keep the old poster after 6 April 2009 must make sure it is legible and keep the addresses of the enforcing authority and the employment medical advisory service up to date.**

HSE has managed to keep the price of the new poster and packs of the pocket cards the same. The poster is being printed using a new fully bio-degradable form of plastic. At current VAT rates the standard version costs £7.34. The semi-rigid version costs £11.75. Packs of the pocket card cost £5.00.

### Safety body seek applicants with a background in construction

The Health and Safety Executive (HSE) is seeking to recruit up to 30 construction inspectors in a bid to improve site safety. They recently recruited 19 new trainee inspectors who have a background in construction, bringing the total number of full-time operational construction inspectors visiting sites on a day-to-day basis to 138.



New recruits will be able to serve enforcement notices and fines. The HSE said they would be used to carry out site inspections to ensure risks were "properly controlled, using advice, inspection, and where necessary, formal enforcement".

**SO KEEP YOUR EYES PEELED!**

# Noble



## Training Courses May 09

### Non-Construction

Emergency Aid	01 May
Manual Handling	01 May
Emergency Aid	29 May

### Construction Courses

Site Managers Safety Training Scheme (SMSTS)	06/13/20 & 27 May 03 June
Mobile Towers & Ladders	22 May
Working @ Height	22 May

### Asbestos Courses

Asbestos Awareness Refresher	15 May
HSG210 Working with Asbestos Products Refresher	15 May
Asbestos Awareness	21 May
Working with Asbestos Products	21 May

**NB: All courses will be held in Plymouth unless otherwise stated**

**To book a place on any of the above courses or for further information on our in house or bespoke courses please contact Rebecca Huddy on 0844 561 6735 or e-mail rebecca.h@noble.uk.net**

